

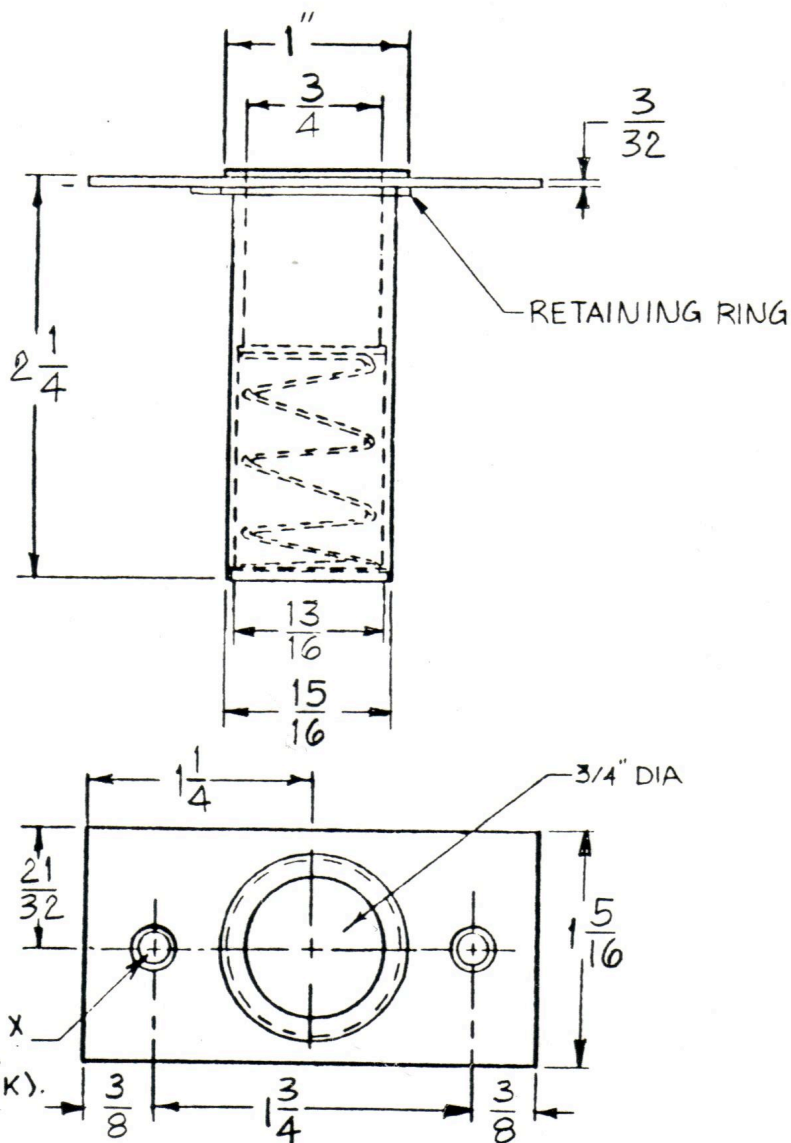
NOTES :

1. ADD SUFFIX "N" TO PART NUMBER FOR DUST PROOF STRIKE LESS FACE PLATE.

A REVISED: 3-13-87

B REVISED: 8-17-95

C REVISED: 9-16-95 TA



001102

DWG. NO. 11561

Trimco

Triangle Brass Manufacturing Company, Inc.

3528 Emery Street, P.O. Box 23277
Los Angeles, CA 90023, USA

3910

DUST PROOF STRIKE

DR. BY: L.R.

Book No. _____ Date Requested: _____
This template is provided for use only on
the job for which it was requested.
Trimco reserves the right to make design
changes without notice.